



360° Transparent Polycarbonate Domes

--- Outdoor luxury restaurants, coffee shops, sunrooms, etc

Catalog 2024



Product introduction:

Dreamdomes series is a brand-new characteristic dome house product that we have created. The product has a unique 360-degree transparent view.

The main material of the product adopts imported polycarbonate (basic material of bullet-proof glass and explosion-proof shield) and aviation aluminum profile, which has high safety and strong protection. It can safely avoid snakes, insects, ants, and large beasts in the wild.

At the same time, the product adopts modular assembly design, the installation and disassembly process is simple and fast, and the on-site assembly cost is low.

Dreamdomes series products have a variety of specifications such as diameters of 2.1M, 3.5M, 4.5M, 5.3M, 6.0M, 7.0M, 10M, and products of different specifications can be spliced and combined with each other. The product is highly flexible and can meet the application needs of multiple scenarios.



* High Stable Structure and Strength

- The structure is stable with a dome-shaped design, and it can withstand a wind speed of around 140km/h.
- The polycarbonate sheet from Bayer is renowned for its unmatched strength and resilience. Unlike other materials, polycarbonate is virtually unbreakable, making our domes extremely durable and long-lasting. The impact strength of PC sheet is 250-300 times that of ordinary glass, and it can withstand the beating of a hammer. When used in the wild, this is a very safe shelter from all kinds of wild animals, such as bears!



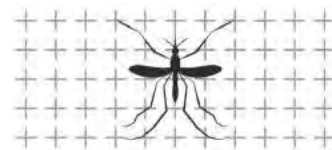
* Transparent Material Imported from Germany

- Adopt the polycarbonate material imported from Germany, with a double-sided 100 μ UV coating, it's 100% UV resistance.
- The light transmittance is as high as 90%, and the transparency effect is good
- The fire protection grade of the material is B1 flame retardant, non-toxic odorless, and highly safe.
- One of the key features of the PC sheet is its excellent sound insulation effect. It can absorb sound waves, preventing them from passing through the panel.



* Exquisite Aluminum Processing Technology

- Doors and windows all adopt round arch design, integrated bending process, no seams, and no exposed bolts on the surface.
- The top aluminum alloy connection ring is used to connect the side PC and the top dome cover, with higher strength and better sealing
- The doors and windows are integrated with 304 stainless steel screens, which have good mosquito-proof effect and are ventilated.



* Atmosphere Decorative LED Lighting

- The back panel of the heat sink is made of aviation aluminum alloy, use high quality SMD5050 RGB LED Strip Light. More than 200 kinds of light effects can be controlled by mobile APP. The upper cover is made of the milky PC, which makes the lighting effect more beautiful, and it is waterproof and durable, and fits the dome closely.
- Use high quality SMD2835 warm white LED Strip Light. Both inside and outside, hidden in the base lamp slot, not dazzling, see the light but not the lamp. The inner and outside strip light can be hidden in the base lamp slot. It's eye comforting.



More than 200 lighting models to choose from



* Powerful Exhaust Fan

- Taking ventilation performance to the next level, we offer an optional high-efficiency exhaust fan that can be installed in our PC Dome. This exhaust fan not only enhances the overall airflow but also eliminates any stale or trapped air, ensuring a fresh and comfortable environment inside the dome.
- With a built-in anti-mosquito screen to prevent mosquitoes and insects from entering, and can also be removed for cleaning



* Smart Door Lock System

- It comes standard with an aluminum alloy die-cast fully waterproof body, designed for outdoor use and long service life
- You only need to swipe the card once, it is always open all day long, no need to swipe the card frequently so it is convenient to enter and exit.
Swipe the card twice in succession and the door lock will be closed.
- With an anti-violent disassembly protection system, high safety



* Electric Curtain System

- The top curtain of the PC Dome with a diameter of more than 4M uses an electric remote control to open and close
- PC extruded transparent rails are used on the sides, which are high in strength and do not block the view.



* Air Conditioner

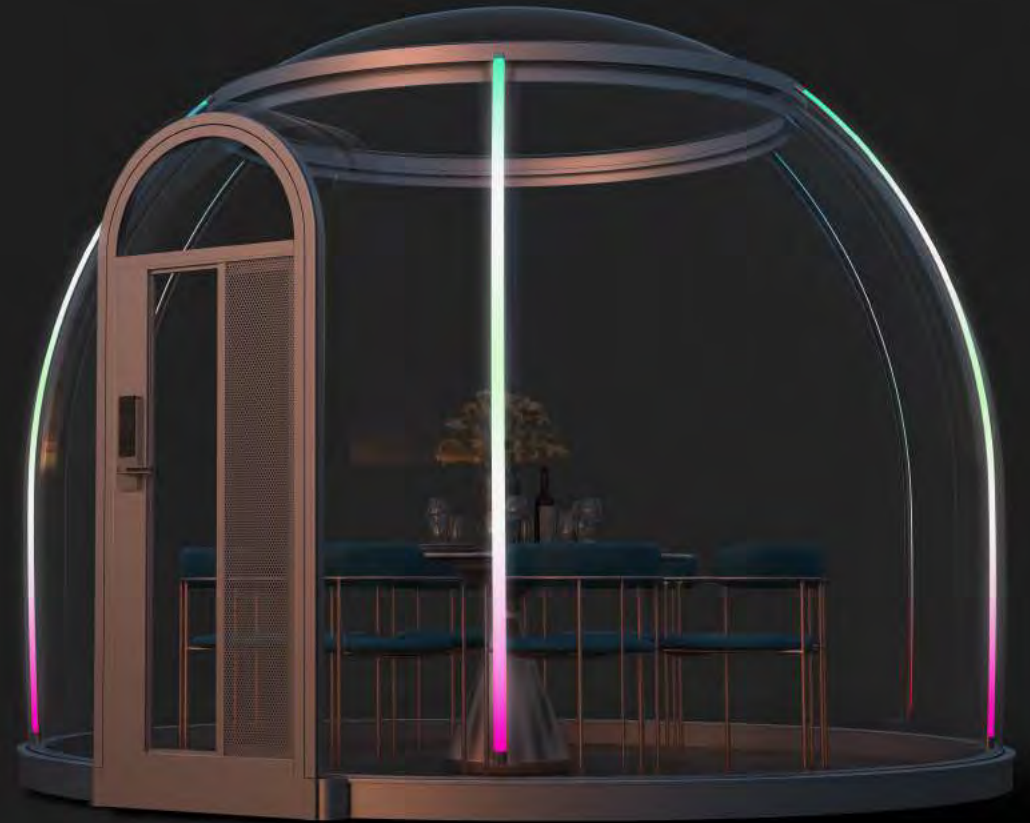
- The dome products have excellent thermal insulation effects, and air conditioning can be used for cooling and heating in summer and winter, thus the dining experience inside is amazing.



Product Specifications

Model	Size	Proposal Application
Dreamdomes 2.1A	φ2.1M*H2.4M	2 People
Dreamdomes 3.0A	φ3.0M*H2.55M	4-6 People
Dreamdomes 3.5A	φ3.48M*H2.7M	6-8 People
Dreamdomes 4.0A	φ3.96M*H2.92M	8-10 People
Dreamdomes 4.5A	φ4.5M*H3.2M	10-12 People
Dreamdomes 5.3A	φ5.37M*H3.5M	12-15 People
Dreamdomes 6.0A	φ6.18M*H3.8M	15-18 People
Dreamdomes 7.0A	φ7.15M*H4.5M	18-25 People
Dreamdomes 10.0A	φ10.0M*H5.8M	30-40 People

Starry Sky Series



Product Specifications

Model	Size	Propasal Application
Stargate D3.5	φ3.5M*H2.7M	6-8 People
Stargate D4.0	φ4.0M*H2.9M	8-10 People
Stargate D4.5	φ4.5M*H3.2M	10-12 People
Stargate D5.0	φ5.0M*H3.5M	12-14 People

Stargate Series



Product Specifications

Model	Size	Propasal Application
Stargate L18	L18000*W6000*H3500mm	60 People

* Size can be customized!



Product Specifications

Model	Size	Proposal Application
Dreamdomes B3550	L5000 * W3500 * H 2700mm	10 People
Dreamdomes B3565	L6500 * W3500 * H 2700mm	14 People
Dreamdomes B3580	L8000 * W3500 * H 2700mm	18 People
Dreamdomes B4071	L7100 * W4000 * H 2900mm	16 People
Dreamdomes B4585	L8500 * W4500 * H 3200mm	20 People

* Length can be customized!

Star Capule Series

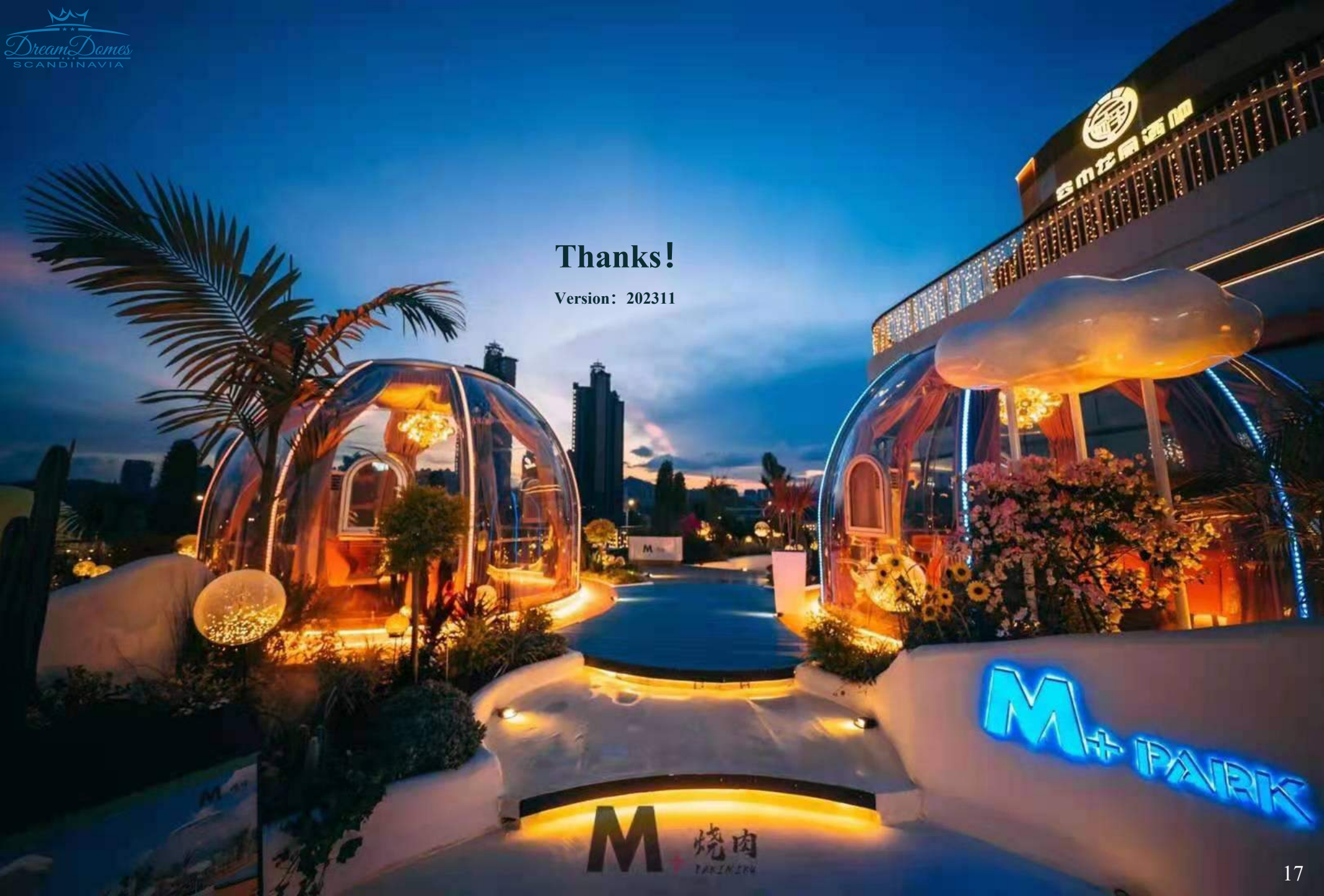






Thanks!

Version: 202311





Distributed by Dream Domes U.S.



Aurora Smart Technologies, LLC

W. Gerard Poole, Ph.D.
CEO/Founder

Diana Alger-Poole

202-531-0870
info@Dreamdomes.US